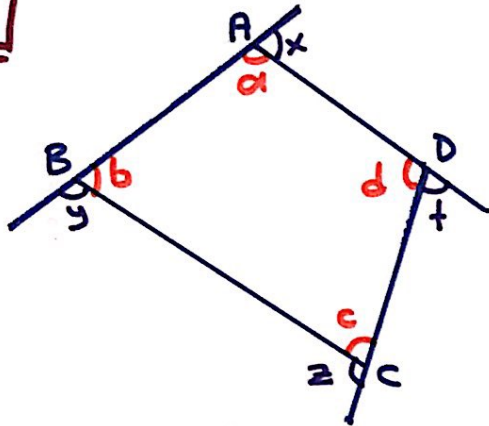


DÖRTGENLER

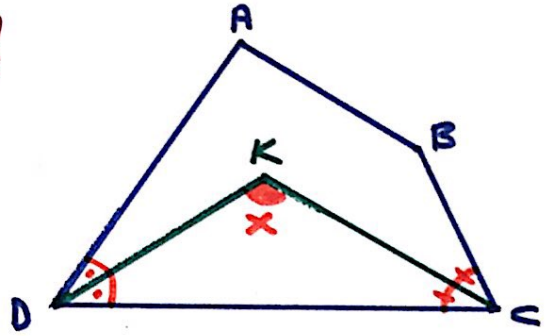
1



$\checkmark a+b+c+d=360^\circ$

$\checkmark x+y+z+t=360^\circ$

2

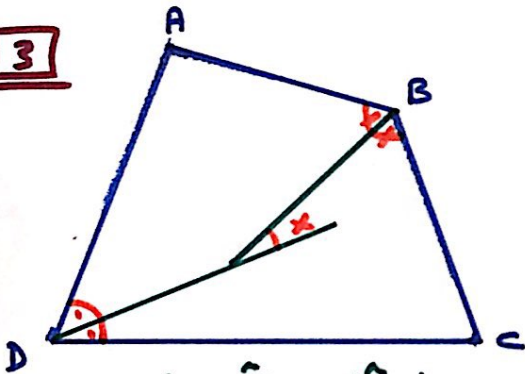


$\checkmark x = \frac{m(\hat{A}) + m(\hat{B})}{2}$

@ibrahim-hocca

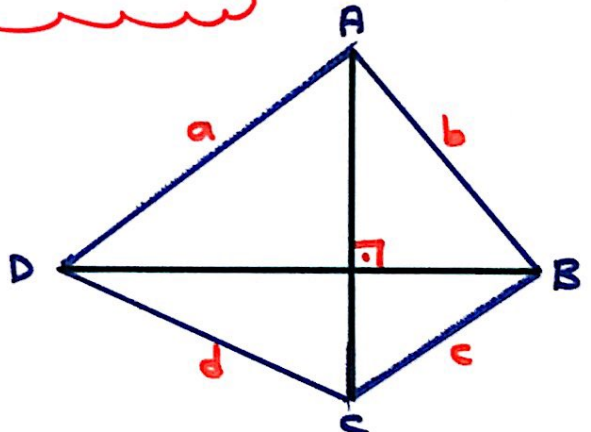
@metuslah-hoca

3



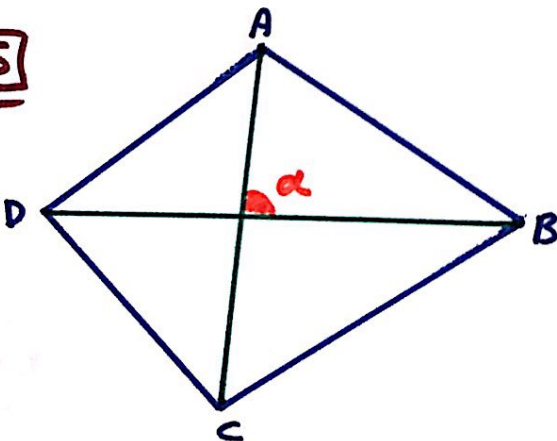
$\checkmark x = \frac{|m(\hat{A}) - m(\hat{C})|}{2}$

4



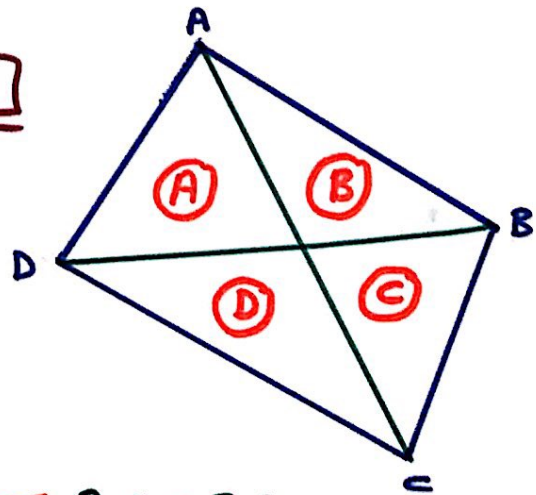
$\checkmark a^2 + c^2 = b^2 + d^2$

5



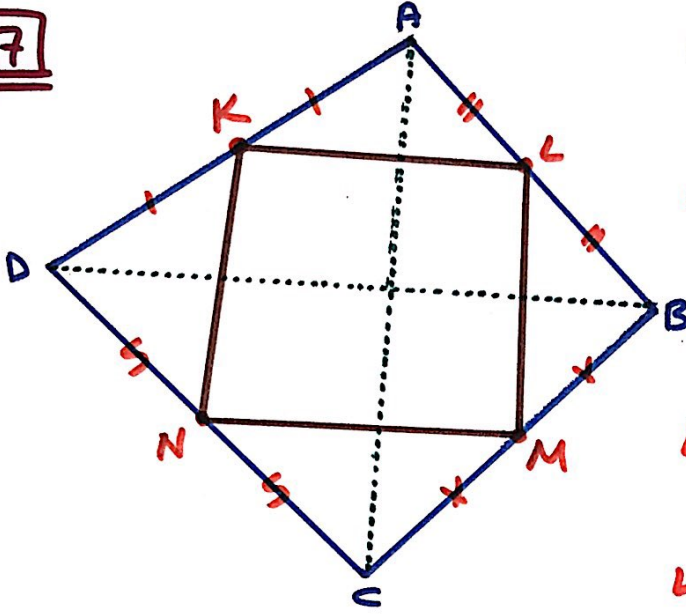
$\checkmark A(ABCD) = \frac{1}{2} \cdot |AC| \cdot |BD| \cdot \sin \alpha$

6



$\checkmark A \cdot C = B \cdot D$

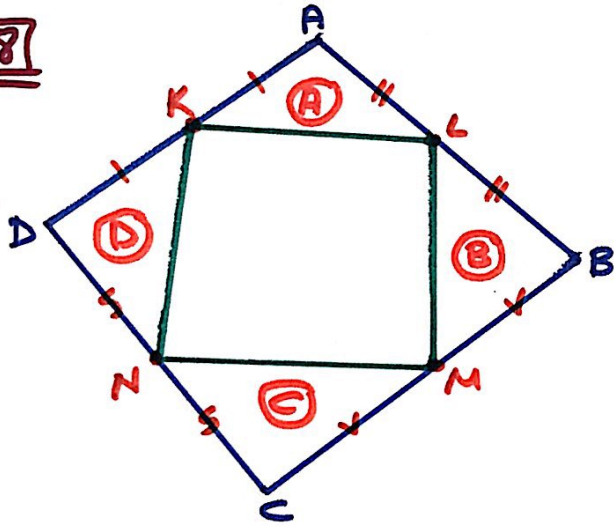
7



K, L, M, N bulunduđları kenarların orta noktaları o.ü.

- ✓ $KLMN$ paralelkenardır.
- ✓ $|AC| = |BD|$ ise $KLMN$ eşkenar dörtgendir.
- ✓ $[AC] \perp [BD]$ ise $KLMN$ dikdörtgendir.
- ✓ $[AC] \perp [BD]$ ve $|AC| = |BD|$ $KLMN$ karedir.

8



- ✓ $\angle(KLMN) = |AC| + |BD|$
- ✓ $A + C = B + D$
- ✓ $A(KLMN) = A + B + C + D$
- ✓ $A(KLMN) = \frac{A(ABCD)}{2}$

@ibrahim-hocca

@metuslah-hoca