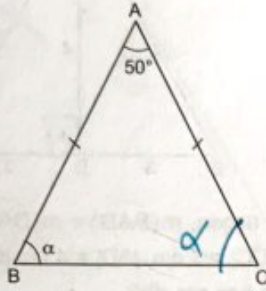


1.

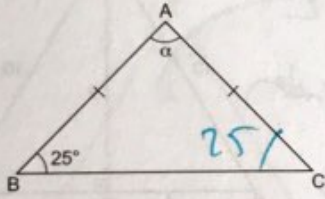


ABC bir ikizkenar üçgen, $|AB| = |AC|$, $m(\widehat{BAC}) = 50^\circ$ ise, $m(\widehat{ABC}) = \alpha$ kaç derecedir?

- A) 65 B) 70 C) 75 D) 80 E) 85

$$\begin{aligned} \alpha + \alpha + 50 &= 180 \\ 2\alpha &= 130 \\ \alpha &= 65 \end{aligned}$$

2.

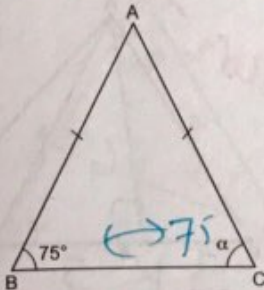


ABC bir ikizkenar üçgen, $|AB| = |AC|$, $m(\widehat{ABC}) = 25^\circ$ ise, $m(\widehat{BAC}) = \alpha$ kaç derecedir?

- A) 120 B) 130 C) 140 D) 150 E) 160

$$\begin{aligned} 25 + \alpha + 25 &= 180 \\ \alpha &= 130 \end{aligned}$$

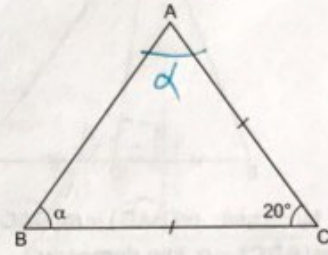
3.



ABC bir ikizkenar üçgen, $|AB| = |AC|$, $m(\widehat{ABC}) = 75^\circ$ ise, $m(\widehat{ACB}) = \alpha$ kaç derecedir?

- A) 30 B) 45 C) 60 D) 75 E) 90

4.

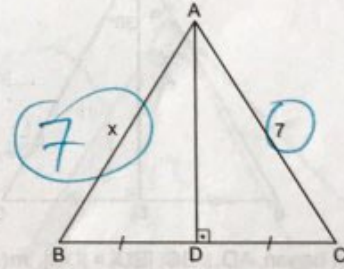


ABC bir ikizkenar üçgen, $|AC| = |BC|$, $m(\widehat{ACB}) = 20^\circ$ ise, $m(\widehat{ABC}) = \alpha$ kaç derecedir?

- A) 40 B) 50 C) 60 D) 70 E) 80

$$\begin{aligned} \alpha + 20 + \alpha &= 180 \\ \alpha &= 80 \end{aligned}$$

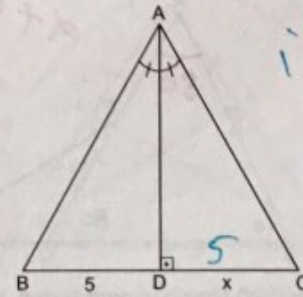
5.



ABC bir üçgen, $AD \perp BC$, $|BD| = |DC|$, $|AC| = 7$ cm ise, $|AB| = x$ kaç cm dir?

- A) 4 B) 5 C) 6 D) 7 E) 8

6.



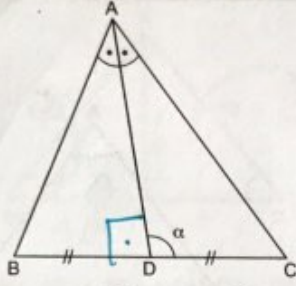
ABC bir üçgen, $m(\widehat{BAD}) = m(\widehat{DAC})$, $AD \perp BC$, $|BD| = 5$ cm ise, $|DC| = x$ kaç cm dir?

- A) 4 B) 5 C) 6 D) 7 E) 8

YAYIN DENİZİ

İKİZKENAR ÜÇGEN

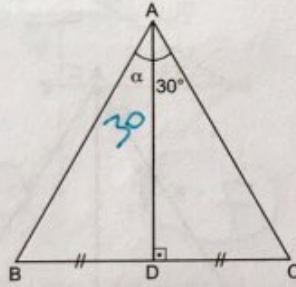
7.



ABC bir üçgen, $m(\widehat{BAD}) = m(\widehat{DAC})$, $|BD| = |DC|$ ise, $m(\widehat{ADC}) = \alpha$ kaç derecedir?

- A) 30 B) 60 C) 75 D) 80 ~~E) 90~~

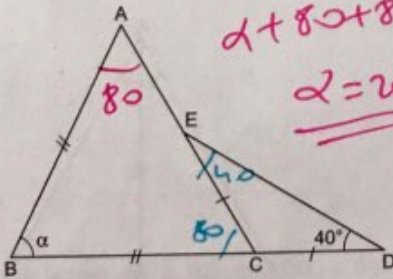
8.



ABC bir üçgen, $AD \perp BC$, $|BD| = |DC|$, $m(\widehat{DAC}) = 30^\circ$ ise, $m(\widehat{BAD}) = \alpha$ kaç derecedir?

- A) 20 ~~B) 30~~ C) 40 D) 50 E) 60

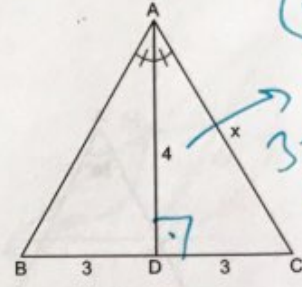
9.



ABC ve ECD birer ikizkenar üçgen, $|AB| = |BC|$, $|EC| = |CD|$, $m(\widehat{BDE}) = 40^\circ$ ise, $m(\widehat{ABC}) = \alpha$ kaç derecedir?

- A) 5 B) 10 C) 15 ~~D) 20~~ E) 30

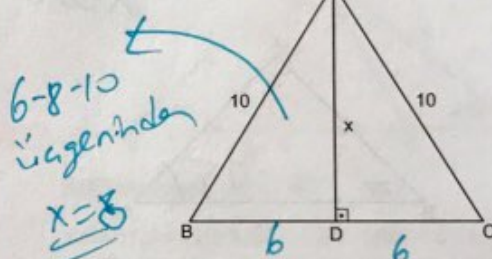
10.



ABC bir üçgen, $m(\widehat{BAD}) = m(\widehat{DAC})$, $|BD| = |DC| = 3$ cm, $|AD| = 4$ cm ise, $|AC| = x$ kaç cm dir?

- A) 3 B) 4 ~~C) 5~~ D) 6 E) 7

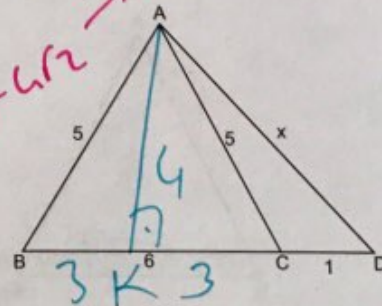
11.



ABC bir üçgen, $AD \perp BC$, $|AB| = |AC| = 10$ cm, $|BC| = 12$ cm ise, $|AD| = x$ kaç cm dir?

- A) 5 B) 6 ~~C) 7~~ ~~D) 8~~ E) 9

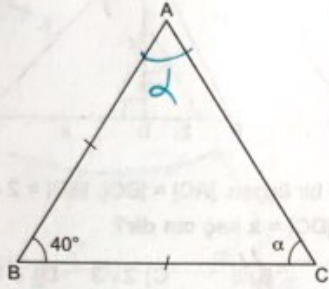
12.



ABD bir üçgen, $|AB| = |AC| = 5$ cm, $|BC| = 6$ cm, $|CD| = 1$ cm ise, $|AD| = x$ kaç cm dir?

- A) 4 B) 5 C) $2\sqrt{7}$ ~~D) $4\sqrt{2}$~~ E) 6

1.

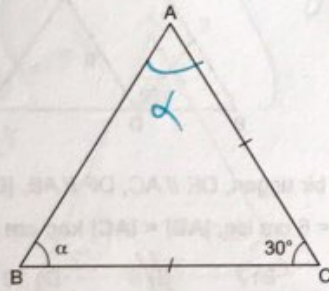


ABC bir ikizkenar üçgen, $|AB| = |BC|$, $m(\widehat{ABC}) = 40^\circ$ ise, $m(\widehat{BCA}) = \alpha$ kaç derecedir?

- A) 40 B) 50 C) 60 ~~D) 70~~ E) 80

$40 + \alpha + \alpha = 180$
 $\alpha = 70^\circ$

2.

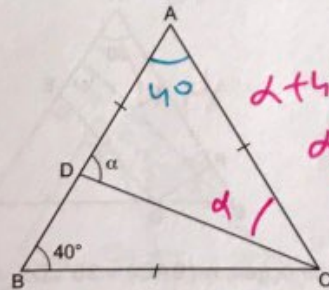


ABC bir ikizkenar üçgen, $|AC| = |BC|$, $m(\widehat{ACB}) = 30^\circ$ ise, $m(\widehat{ABC}) = \alpha$ kaç derecedir?

- A) 55 B) 60 C) 65 D) 70 ~~E) 75~~

$\alpha + 30 + \alpha = 180$
 $\alpha = 75$

3.



ABC bir üçgen, $|AD| = |AC| = |BC|$, $m(\widehat{ABC}) = 40^\circ$ ise, $m(\widehat{ADC}) = \alpha$ kaç derecedir?

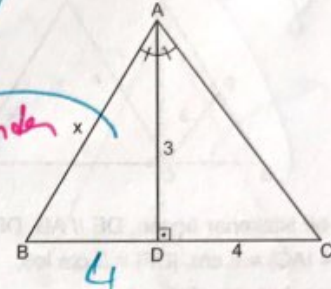
- A) 50 B) 60 ~~C) 70~~ D) 80 E) 90

$\alpha + 40 + \alpha = 180$
 $\alpha = 70$

4.



3-4-5 üçgeninden



ABC bir üçgen, $m(\widehat{BAD}) = m(\widehat{DAC})$, $AD \perp BC$, $|AD| = 3$ cm, $|DC| = 4$ cm ise, $|AB| = x$ kaç cm dir?

- ~~A) 5~~ B) 6 C) 7 D) 8 E) 9

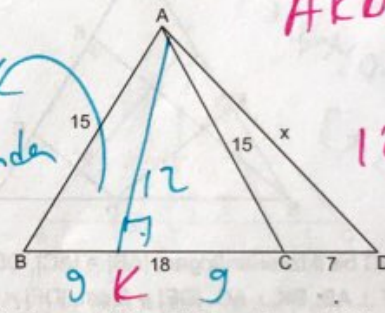
$x = 5$

5.

9-12-15 üçgeninde

AKO üçgeni -den

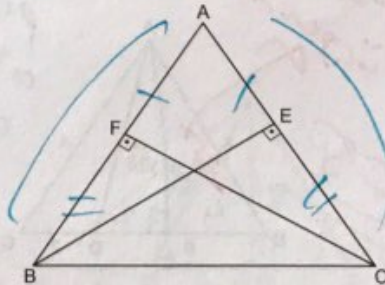
12-16-x
20



ABD bir üçgen, $|AB| = |AD| = 15$ cm, $|BC| = 18$ cm, $|CD| = 7$ ise, $|AD| = x$ kaç cm dir?

- ~~A) 20~~ B) 21 C) 25 D) 30 E) 32

6.



ABC bir ikizkenar üçgen, $|AB| = |AC|$, $BE \perp AC$, $CF \perp AB$, $|BE| = 7$ cm ise, $|CF|$ kaç cm dir?

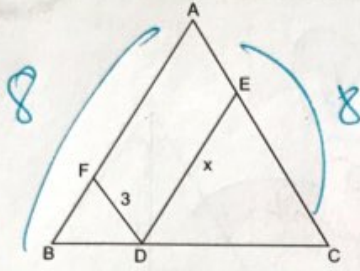
- ~~A) 7~~ B) 8 C) 10 D) 12 E) 14

$|CF| = 7$

YAYIN DENİZİ

İKİZKENAR ÜÇGEN

7.



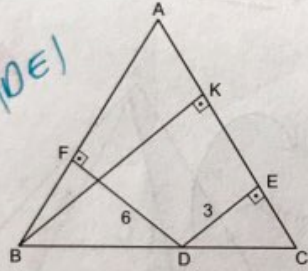
ABC bir ikizkenar üçgen, $DE \parallel AB$, $DF \parallel AC$,
 $|AB| = |AC| = 8$ cm, $|DF| = 3$ cm ise,
 $|DE| = x$ kaç cm dir?

- A) 4 B) 5 C) 6 D) 7 E) 8

$8 = 3 + x$
 $x = 5$

8.

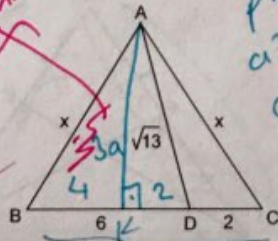
Kural
 $|BK| = |FD| + |DE|$
 $9 = 6 + 3$



ABC bir ikizkenar üçgen, $|AB| = |AC|$, $DE \perp AC$,
 $DF \perp AB$, $BK \perp AC$, $|DE| = 3$ cm, $|DF| = 6$ cm ise,
 $|BK|$ kaç cm dir?

- A) 7 B) 8 C) 9 D) 10 E) 11

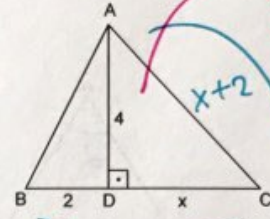
9. 3-4-5
 üçgeninden
 $x = 5$



ABC bir üçgen, $|BD| = 6$ cm, $|DC| = 2$ cm
 $|AD| = \sqrt{13}$ cm ise, $|AB| = |AC| = x$ kaç cm dir?

- A) 5 B) $3\sqrt{3}$ C) $2\sqrt{7}$ D) $4\sqrt{2}$ E) 6

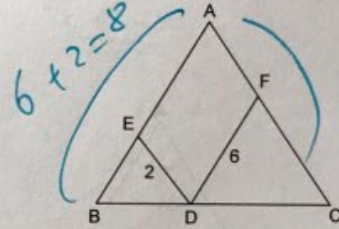
10.



ABC bir üçgen. $|AC| = |BC|$, $|BD| = 2$ cm, $|AD| = 4$ cm
 ise, $|DC| = x$ kaç cm dir?

- A) 2 B) 3 C) $2\sqrt{3}$ D) $\sqrt{13}$ E) 4

11.

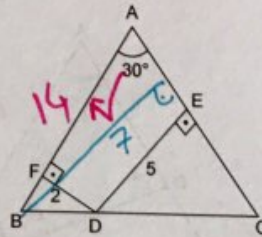


ABC bir üçgen, $DE \parallel AC$, $DF \parallel AB$, $|DE| = 2$ cm
 $|DF| = 6$ cm ise, $|AB| = |AC|$ kaç cm dir?

- A) 6 B) 7 C) 8 D) 10 E) 12

AKD
 Pisagor
 $a^2 + 2^2 = (\sqrt{13})^2$
 $a^2 + 4 = 13$
 $a^2 = 9$
 $a = 3$

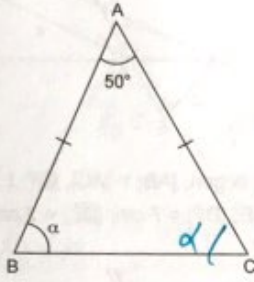
12.



ABC bir üçgen, $m(\widehat{BAC}) = 30^\circ$, $DF \perp AB$, $DE \perp AC$
 $|DF| = 2$ cm, $|DE| = 5$ cm ise, $|AB| = |AC|$ kaç cm dir?

- A) 10 B) 12 C) 14 D) 16 E) 18

1.



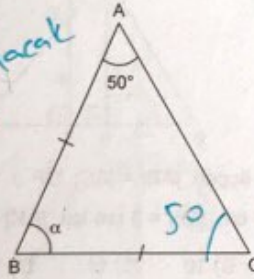
ABC bir ikizkenar üçgen, $|AB| = |AC|$, $m(\widehat{BAC}) = 50^\circ$ ise, $m(\widehat{ABC}) = \alpha$ kaç derecedir?

- A) 60 B) 65 C) 70 D) 85 E) 95

$$\alpha + 50 + \alpha = 180$$

$$\alpha = 65$$

2. cevap 80 olacak dikkat



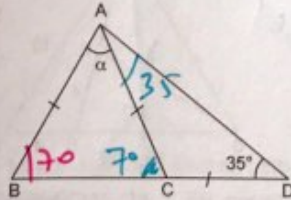
ABC bir ikizkenar üçgen, $|AB| = |BC|$, $m(\widehat{BAC}) = 50^\circ$ ise, $m(\widehat{ABC}) = \alpha$ kaç derecedir?

- A) 40 B) 65 C) 70 D) 60 E) 64

$$\alpha + 50 + 50 = 180$$

$$\alpha = 80$$

3.



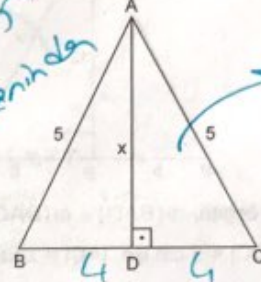
ABD bir üçgen, $|AB| = |AC| = |CD|$, $m(\widehat{ADB}) = 35^\circ$ ise, $m(\widehat{BAC}) = \alpha$ kaç derecedir?

- A) 30 B) 40 C) 45 D) 50 E) 55

$$\alpha + 70 + 70 = 180$$

$$\alpha = 40$$

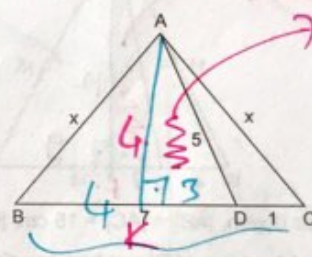
4.



ABC bir üçgen, $AD \perp BC$, $|AB| = |AC| = 5$ cm $|BC| = 8$ cm ise, $|AD| = x$ kaç cm dir?

- A) $2\sqrt{2}$ B) 3 C) $2\sqrt{3}$ D) $3\sqrt{2}$ E) 4

5.

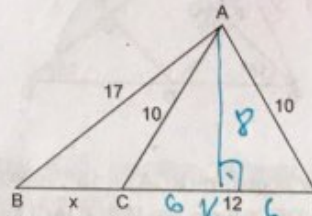


ABC bir üçgen, $|AB| = |AC|$, $|BD| = 7$ cm $|DC| = 1$ cm, $|AD| = 5$ cm ise, $|AC| = |AB| = x$ kaç cm dir?

- A) $\sqrt{26}$ B) $2\sqrt{7}$ C) $\sqrt{30}$ D) $4\sqrt{2}$ E) 6

$$AKD \text{ 4-4-4\sqrt{2}}$$

6.



ABD bir üçgen, $|AB| = 17$ cm, $|AC| = |AD| = 10$ cm $|CD| = 12$ cm ise, $|BC| = x$ kaç cm dir?

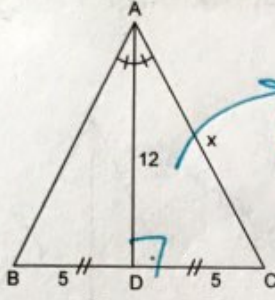
- A) 5 B) 6 C) 7 D) 8 E) 9

$$AKB' \text{ de } 8-15-17 \text{ üçgeninde.}$$

$$6+x=15 \quad x=9$$

İKİZKENAR ÜÇGEN

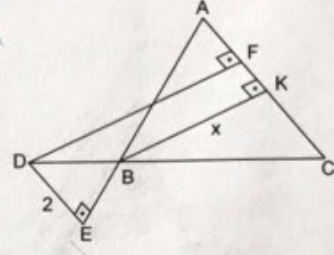
7.



ABC bir üçgen, $m(\widehat{BAD}) = m(\widehat{DAC})$, $|AD| = 12$ cm
 $|BD| = |DC| = 5$ cm ise, $|AC| = x$ kaç cm dir?

- A) 13 B) 14 D) 15 E) 16 E) 17

5-12-13
 üçgeninde
 $x=13$
 10. Kural

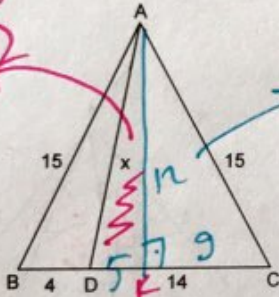


ABC bir üçgen, $|AB| = |AC|$, $DF \perp AC$, $BK \perp AC$,
 $DE \perp AE$, $|DF| = 7$ cm, $|DE| = 2$ cm ise, $|BK| = x$ kaç
 cm dir?

- A) 3 B) 4 C) 5 D) 6 E) 74

$$|BK| = |DF| - |DE| = 7 - 2 = 5 //$$

8. AKD'de
 5-12-13'ten
 $x=13$

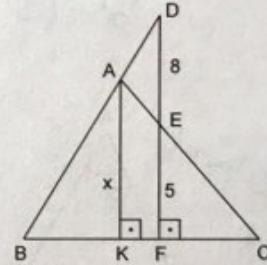


ABC bir üçgen, $|AB| = |AC| = 15$ cm, $|BD| = 4$ cm
 $|DC| = 14$ cm ise, $|AD| = x$ kaç cm dir?

- A) 10 B) 11 C) 12 D) 13 E) 14

9-12-15
 üçgeninden Kural

11.

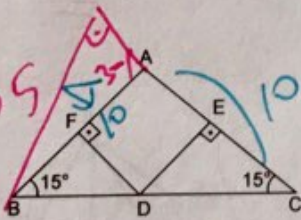


ABC bir üçgen, $|AB| = |AC|$, $DF \perp BC$, $AK \perp BC$
 $|DE| = 8$ cm, $|EF| = 5$ cm ise, $|AK| = x$ kaç cm dir?

- A) 9 B) 10 C) 11 D) 12 E) 13

$$|AK| = \frac{|DE| + |EF|}{2} = \frac{8}{2} + 5 = 9 //$$

9.

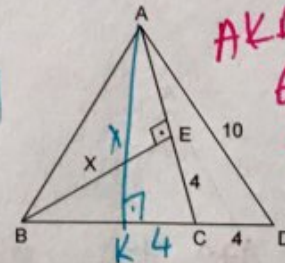


ABC bir üçgen, $m(\widehat{BCA}) = 15^\circ$, $m(\widehat{ABC}) = 15^\circ$
 $|DF| + |DE| = 5$ cm, ise $|AB| = |AC|$ kaç cm dir?

- A) 6 B) 8 C) 10 D) $8\sqrt{3}$ E) $9\sqrt{2}$

YAYIN DENİZİ

12. zor soru !!
 $|AK| = |BE|$



ABD bir üçgen, $BE \perp AC$, $|AC| = |BC|$,
 $|EC| = |CD| = 4$ cm, $|AD| = 10$ cm ise,
 $|BE| = x$ kaç cm dir?

- A) 4 B) 5 C) 6 D) 7 E) 8

AKD
 6-8-10
 üçgeninde
 $x=6$