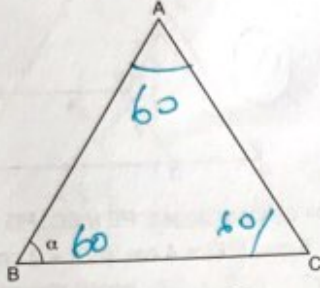


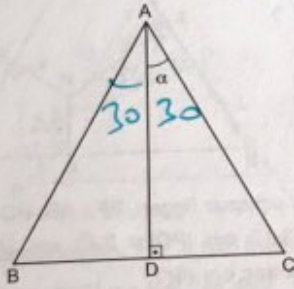
1.



ABC bir eşkenar üçgen ise,  $m(\widehat{ABC}) = \alpha$  kaç derecedir?

- A) 30 B) 45 ~~C) 60~~ D) 75 E) 90

2.

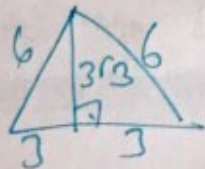


ABC bir eşkenar üçgen,  $AD \perp BC$  ise,  $m(\widehat{DAC}) = \alpha$  kaç derecedir?

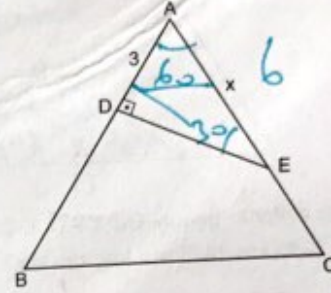
- ~~A) 30~~ B) 40 C) 45 D) 50 E) 55

3. Çevresi 18 cm olan bir eşkenar üçgenin yüksekliği kaç cm dir?

- A) 4 B)  $3\sqrt{2}$  ~~C)  $3\sqrt{3}$~~  D) 5 E) 6



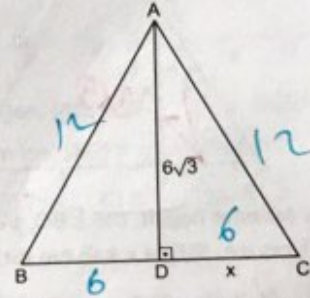
4.



ABC bir eşkenar üçgen,  $ED \perp AB$ ,  $|AD| = 3$  cm ise,  $|AE| = x$  kaç cm dir?

- A) 4 B) 5 ~~C) 6~~ D) 8 E) 10

5.

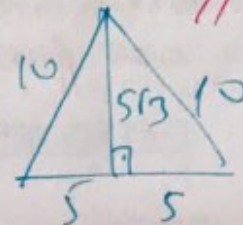


ABC bir eşkenar üçgen,  $AD \perp BC$ ,  $|AD| = 6\sqrt{3}$  cm ise,  $|DC| = x$  kaç cm dir?

- A) 2 B) 3 C) 4 D) 5 ~~E) 6~~

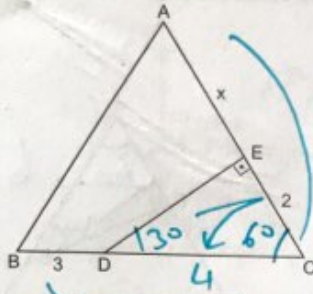
6. Yüksekliği  $5\sqrt{3}$  cm olan eşkenar üçgenin bir kenarı kaç cm dir?

- A) 4 B) 6 C) 8 ~~D) 10~~ E) 12



# EŞKENAR ÜÇGEN

7.

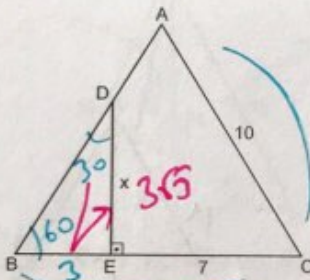


ABC bir eşkenar üçgen,  $DE \perp AC$ ,  $|BD| = 3$  cm,  $|EC| = 2$  cm ise,  $|AE| = x$  kaç cm dir?

- A) 2 B) 3 C) 4 **D) 5** E) 6

$7 = x + 2$   
 $x = 5$

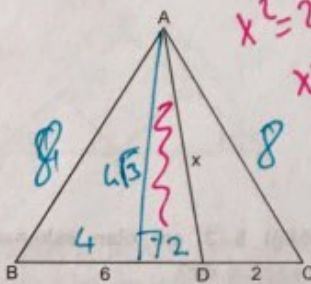
8.



ABC bir eşkenar üçgen,  $DE \perp BC$ ,  $|AC| = 10$  cm,  $|EC| = 7$  cm ise,  $|DE| = x$  kaç cm dir?

- A)  $3\sqrt{2}$  B)  $3\sqrt{3}$  C) 6 D)  $2\sqrt{10}$  E) 7

9.



ABC bir eşkenar üçgen,  $|BD| = 6$  cm,  $|DC| = 2$  cm ise,  $|AD| = x$  kaç cm dir?

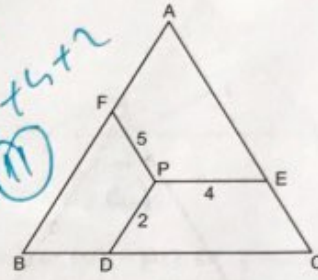
- A) 6 B) 7 C)  $5\sqrt{2}$  **D)  $2\sqrt{13}$**  E) 8

$x^2 = 2^2 + (6\sqrt{3})^2$   
 $x^2 = 4 + 108$   
 $x^2 = 112$   
 $x = 2\sqrt{28}$   
 $x = 2\sqrt{13}$

D  
E  
N  
I  
Z  
İ

10.

Kural  
 $|AB| = 5 + 4 + 2 = 11$

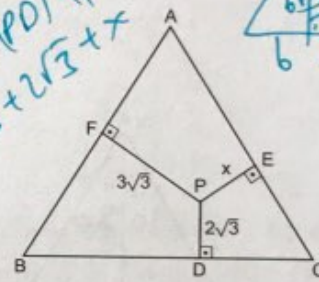
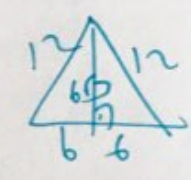


ABC bir eşkenar üçgen,  $PE \parallel BC$ ,  $PD \parallel AB$ ,  $PF \parallel AC$ ,  $|PF| = 5$  cm,  $|PE| = 4$  cm,  $|PD| = 2$  cm ise,  $|AB|$  kaç cm dir?

- A) 8 B) 9 C) 10 **D) 11** E) 12

11.

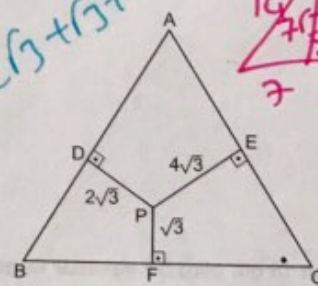
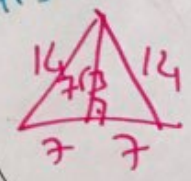
$h = |PF| + |PD| + |PE|$   
 $6\sqrt{3} = 3\sqrt{3} + 2\sqrt{3} + x$



ABC bir eşkenar üçgen,  $PF \perp AB$ ,  $PD \perp BC$ ,  $PE \perp AC$ ,  $|PF| = 3\sqrt{3}$  cm,  $|PD| = 2\sqrt{3}$  cm,  $|AB| = 12$  cm ise,  $|PE| = x$  kaç cm dir?

- A)  $\sqrt{3}$  B)  $2\sqrt{3}$  C) 4 D)  $3\sqrt{2}$  E)  $3\sqrt{3}$

$x = \sqrt{3}$   
 $h = 2\sqrt{3} + \sqrt{3} + 4\sqrt{3} = 7\sqrt{3}$

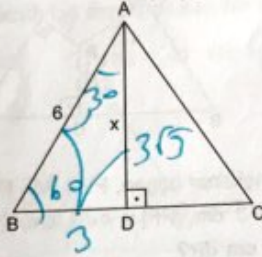


ABC bir eşkenar üçgen,  $PD \perp AB$ ,  $PE \perp AC$ ,  $PF \perp BC$ ,  $|PE| = 4\sqrt{3}$  cm,  $|PD| = 2\sqrt{3}$  cm,  $|PF| = \sqrt{3}$  cm ise,  $|BC|$  kaç cm dir?

- A) 10 B) 11 C) 12 D) 13 **E) 14**

1.C	2.A	3.C	4.C	5.E	6.D	7.D	8.B	9.D	10.D	11.A	12.E
-----	-----	-----	-----	-----	-----	-----	-----	-----	------	------	------

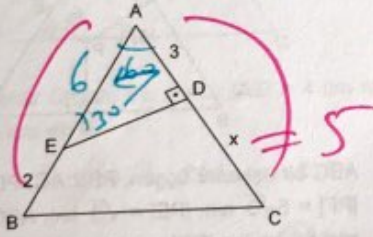
1.



ABC bir eşkenar üçgen,  $AD \perp BC$ ,  
 $|AB| = |AC| = |BC| = 6$  cm ise,  $|AD| = x$  kaç cm dir?

- A)  $2\sqrt{3}$  B)  $3\sqrt{3}$  C) 4 D)  $2\sqrt{7}$  E) 5

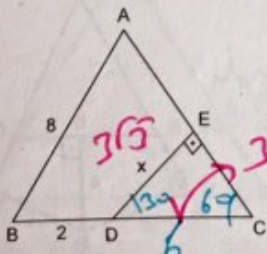
2.



ABC bir eşkenar üçgen,  $ED \perp AC$ ,  $|AD| = 3$  cm  
 $|BE| = 2$  cm ise,  $|DC| = x$  kaç cm dir?

- A) 4 B) 5 C) 6 D) 7 E) 8

3.

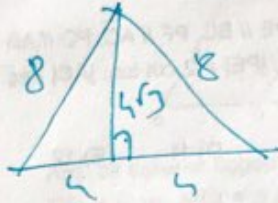


ABC bir eşkenar üçgen,  $DE \perp AC$ ,  $|BD| = 2$  cm,  
 $|AB| = |BC| = |AC| = 8$  cm ise  $|DE| = x$  kaç cm dir?

- A)  $2\sqrt{3}$  B) 3 C)  $3\sqrt{3}$  D) 4 E)  $4\sqrt{2}$

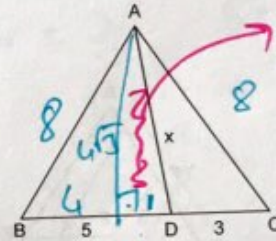
4. Yüksekliği  $4\sqrt{3}$  cm olan bir eşkenar üçgenin çevresi kaç cm dir?

- A) 16 B) 18 C) 21 D) 22 E) 24



$$8 + 8 + 8 = 24$$

5.



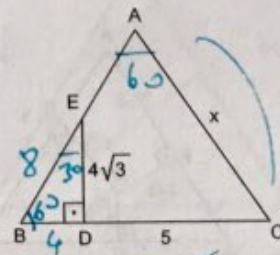
ABC bir üçgen,  $|AB| = |BC| = |AC|$ ,  $|BD| = 5$  cm  
 $|DC| = 3$  cm ise,  $|AD| = x$  kaç cm dir?

- A)  $4\sqrt{3}$  B) 7 C) 8 D)  $6\sqrt{2}$  E) 9

$$x^2 = (4\sqrt{3})^2 + 3^2$$

$$x^2 = 49$$

6.



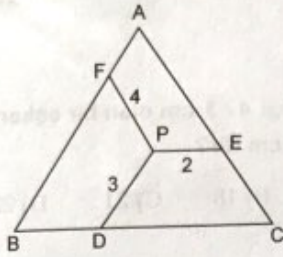
ABC bir eşkenar üçgen,  $ED \perp BC$ ,  $|ED| = 4\sqrt{3}$  cm  
 $|DC| = 5$  cm ise,  $|AC| = x$  kaç cm dir?

- A) 6 B) 7 C) 8 D) 9 E) 10

YAYIN DENİZİ

7.

Kural

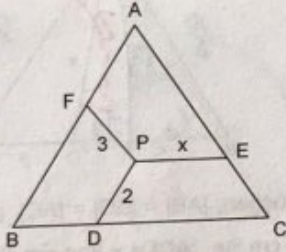


ABC bir eşkenar üçgen,  $PE \parallel BC$ ,  $PF \parallel AC$ ,  $PD \parallel AB$   
 $|PF| = 4$  cm,  $|PD| = 3$  cm,  $|PE| = 2$  cm ise,  $|AC|$  kaç cm dir?

- A) 6 B) 7 C) 9 D) 11 E) 12

$4 + 3 + 2 = 9$

8.



ABC bir eşkenar üçgen,  $PE \parallel BC$ ,  $PF \parallel AC$ ,  $PD \parallel AB$   
 $|PF| = 3$  cm,  $|DP| = 2$  cm, ABC üçgeninin çevresi 30 cm ise  $|PE| = x$  kaç cm dir?

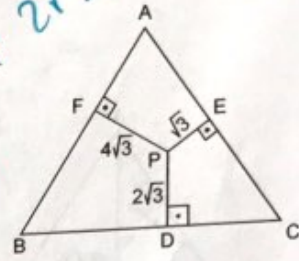
- A) 1 B) 2 C) 4 D) 5 E) 7

$3 + 2 + x = 10$   
 $x = 5$

Kenar = 10

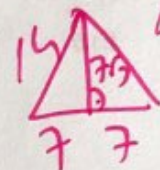
10.

$h = 4\sqrt{3} + 2\sqrt{3} + 6$   
 $h = 7\sqrt{3}$

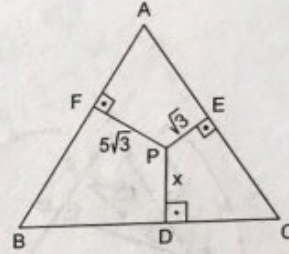


ABC bir eşkenar üçgen,  $PE \perp AC$ ,  $PD \perp BC$ ,  $PF \perp AB$ ,  
 $|PD| = 2\sqrt{3}$  cm,  $|PF| = 4\sqrt{3}$  cm,  $|PE| = \sqrt{3}$  cm ise,  $|AB|$  kaç cm dir?

- A) 12 B) 14 C) 16 D) 18 E) 20



11.



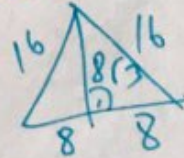
ABC bir eşkenar üçgen,  $PE \perp AC$ ,  $PD \perp BC$ ,  $PF \perp AB$ ,  
 $|PF| = 5\sqrt{3}$  cm,  $|PE| = \sqrt{3}$  cm, ABC üçgeninin çevresi 48 cm ise  $|PD| = x$  kaç cm dir?

- A)  $\sqrt{3}$  B)  $2\sqrt{3}$  C)  $3\sqrt{2}$  D)  $3\sqrt{3}$  E)  $4\sqrt{3}$

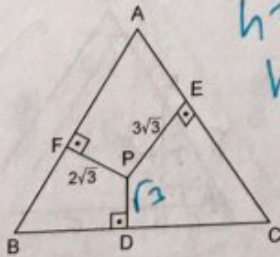
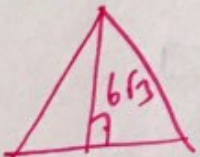
Kenar = 16

$8\sqrt{3} = 5\sqrt{3} + \sqrt{3} + x$

$x = 2\sqrt{3}$



9.



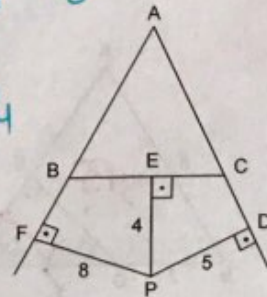
ABC bir eşkenar üçgen,  $PF \perp AB$ ,  $PE \perp AC$ ,  $PD \perp BC$ ,  
 $|PD| = \sqrt{3}$  cm,  $|PF| = 2\sqrt{3}$  cm,  $|PE| = 3\sqrt{3}$  cm ise, eşkenar üçgenin bir kenarına ait yükseklik kaç cm dir?

- A) 5 B) 6 C)  $4\sqrt{3}$  D) 8 E)  $6\sqrt{3}$

$h = 3\sqrt{3} + 2\sqrt{3} + 6$   
 $h = 6\sqrt{3}$

12.

Kural  
 $h = 8 + 5 - 4$   
 $h = 9$

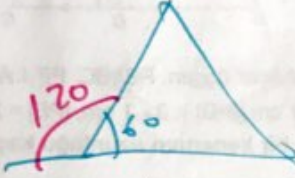


ABC bir eşkenar üçgen,  $PF \perp AB$ ,  $PD \perp AD$ ,  $PE \perp BC$ ,  
 $|PF| = 8$  cm,  $|PD| = 5$  cm,  $|PE| = 4$  cm ise, eşkenar üçgenin bir kenarına ait yükseklik kaç cm dir?

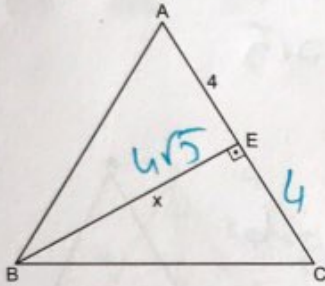
- A) 9 B) 10 C) 11 D) 12 E) 13

1. Eşkenar üçgenin bir dış açısı kaç derecedir?

- A) 75 B) 90 C) 110 D) 115 E) 120



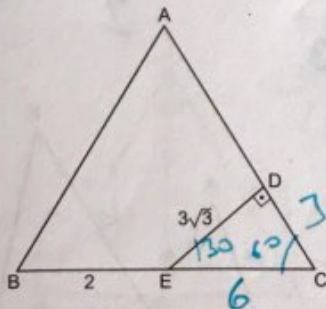
2.



ABC bir eşkenar üçgen,  $BE \perp AC$ ,  $|AE| = 4$  cm ise,  $|BE| = x$  kaç cm dir?

- A) 5 B)  $4\sqrt{2}$  C)  $4\sqrt{3}$  D) 6 E) 8

3.

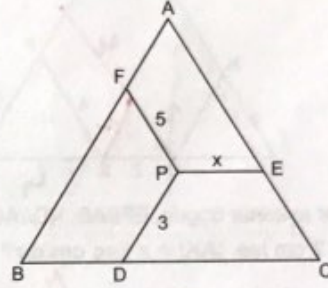


ABC bir eşkenar üçgen,  $ED \perp AC$ ,  $|ED| = 3\sqrt{3}$  cm,  $|BE| = 2$  cm ise, **ABC üçgeninin çevresi kaç cm dir?**

- A) 22 B) 24 C) 26 D) 28 E) 30

$$8 + 8 + 8 = 24$$

4.

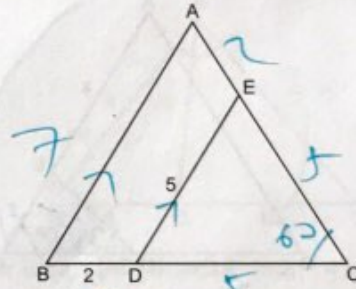


ABC bir eşkenar üçgen,  $PD \parallel AB$ ,  $PE \parallel BC$ ,  $PF \parallel AC$ ,  $|PF| = 5$  cm,  $|PD| = 3$  cm ve ABC üçgeninin çevresi 27 cm ise,  $|PE| = x$  kaç cm dir?

- A) 1 B) 2 C) 3 D) 4 E) 5

$$\begin{aligned} \text{Kenar} &= 9 & 5 + 3 + x &= 9 \\ x &= 1 \end{aligned}$$

5.

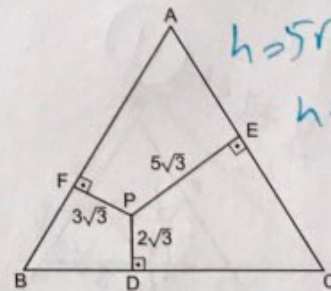


ABC bir eşkenar üçgen,  $DE \parallel AB$ ,  $|DE| = 5$  cm,  $|BD| = 2$  cm ise, **ABC üçgeninin çevresi kaç cm dir?**

- A) 21 B) 23 C) 26 D) 28 E) 32

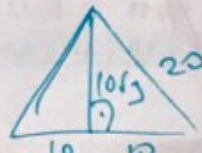
$$7 + 7 + 7 = 21$$

6.



ABC bir eşkenar üçgen,  $PE \perp AC$ ,  $PD \perp BC$ ,  $PF \perp AB$ ,  $|PF| = 3\sqrt{3}$  cm,  $|PD| = 2\sqrt{3}$  cm,  $|PE| = 5\sqrt{3}$  cm ise,  $|AC|$  kaç cm dir?

- A) 14 B) 16 C) 18 D) 20 E) 24

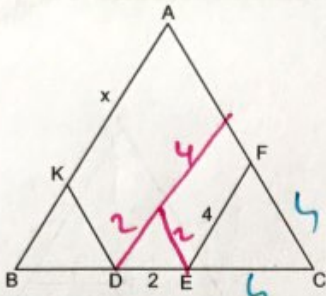


YAYIN

DENİZİ

# EŞKENAR ÜÇGEN

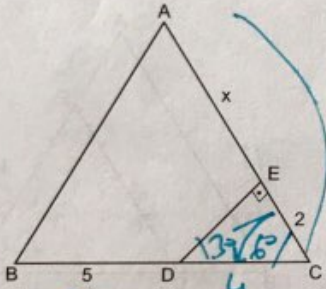
7.



ABC bir eşkenar üçgen,  $EF // AB$ ,  $KD // AC$ ,  $|EF| = 4$  cm,  $|DE| = 2$  cm ise,  $|AK| = x$  kaç cm dir?

- A) 3 B) 4 C) 5 ~~D) 6~~ E) 7

8.

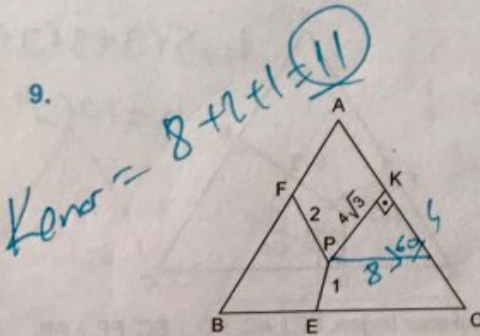


ABC bir eşkenar üçgen,  $DE \perp AC$ ,  $|EC| = 2$  cm,  $|BD| = 5$  cm ise,  $|AE| = x$  kaç cm dir?

- A) 3 B) 4 C) 5 D) 6 ~~E) 7~~

$$9 = x + 2 \quad x = 7$$

9.



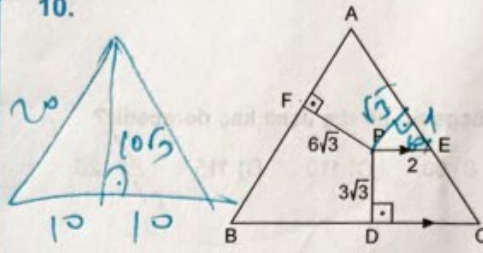
ABC bir eşkenar üçgen,  $PF // AC$ ,  $PE // AB$ ,  $PK \perp AC$ ,  $|PF| = 2$  cm,  $|PE| = 1$  cm,  $|PK| = 4\sqrt{3}$  cm ise ABC üçgeninin bir kenarı kaç cm dir?

- A) 8 B) 9 C) 10 ~~D) 11~~ E) 12

78

1.E	2.C	3.B	4.A	5.A	6.D	7.D	8.E	9.D	10.E	11.E	12.C
-----	-----	-----	-----	-----	-----	-----	-----	-----	------	------	------

10.



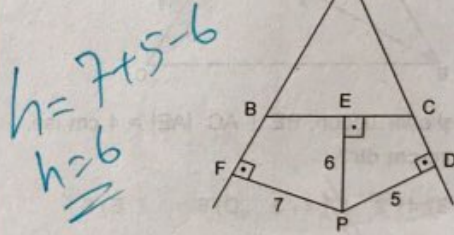
ABC bir eşkenar üçgen,  $PE // BC$ ,  $PF \perp AB$ ,  $PD \perp BC$ ,  $|PF| = 6\sqrt{3}$  cm,  $|PD| = 3\sqrt{3}$  cm,  $|PE| = 2$  cm ise ABC üçgeninin bir kenarının uzunluğu kaç cm dir?

- A) 10 B) 12 C) 14 D) 17 ~~E) 20~~

$$h = 6\sqrt{3} + 3\sqrt{3} + 2$$

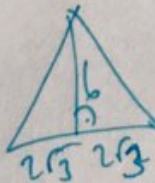
$$h = 10\sqrt{3}$$

11.

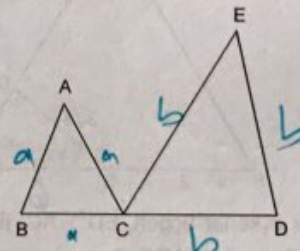


ABC bir eşkenar üçgen,  $PF \perp AB$ ,  $PE \perp BC$ ,  $PD \perp AD$ ,  $|PF| = 7$  cm,  $|PD| = 5$  cm,  $|PE| = 6$  cm ise, ABC eşkenar üçgeninin alanı kaç  $cm^2$  dir?

- A)  $4\sqrt{3}$  B)  $6\sqrt{3}$  C)  $7\sqrt{3}$  D)  $9\sqrt{3}$  ~~E)  $12\sqrt{3}$~~



12.



ABC ve ECD birer eşkenar üçgen,  $|BC| + |CD| = 7$  cm ise, şeklin çevresi kaç cm dir?

- A) 18 B) 19 ~~C) 21~~ D) 26 E) 28

$$3a + 3b = 21$$

YAYIN DENİZİ