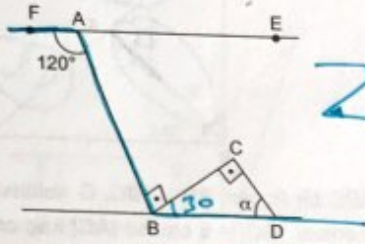


1.



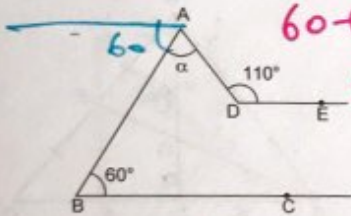
kurul,

$FE \parallel BD$ ,  $AB \perp BC$ ,  $BC \perp CD$ ,  $m(\widehat{FAB}) = 120^\circ$  ise  $m(\widehat{BDC}) = \alpha$  kaç derecedir?

- A) 30 B) 60 C) 75 D) 90 E) 105

$\alpha + 30 = 90$   
 $\alpha = 60$

2.

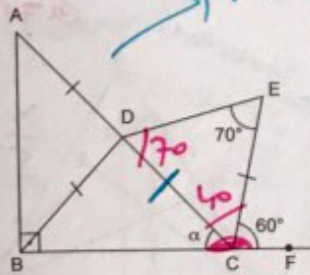


$60 + \alpha = 110$   
 $\alpha = 50$

$DE \parallel BC$ ,  $m(\widehat{ADE}) = 110^\circ$ ,  $m(\widehat{ABC}) = 60^\circ$  ise  $m(\widehat{BAD}) = \alpha$  kaç derecedir?

- A) 40 B) 50 C) 60 D) 70 E) 80

3.



Mutlak eşitlik

ABC bir üçgen,  $AB \perp BF$ ,  $|AD| = |BD| = |CE|$   $m(\widehat{DEC}) = 70^\circ$ ,  $m(\widehat{ECF}) = 60^\circ$  ise  $m(\widehat{ACB}) = \alpha$  kaç derecedir?

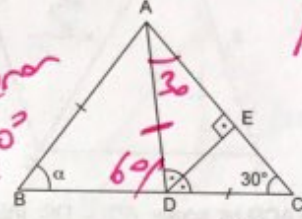
- A) 60 B) 65 C) 70 D) 75 E) 80

$\alpha + 40 + 60 = 180$   
 $\alpha = 80$

4.

ABD ikizkenar  $\alpha = 60^\circ$

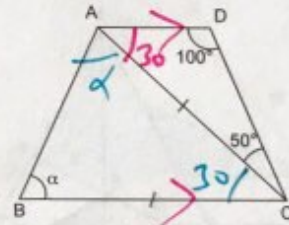
ADC ikizkenar



ABC bir üçgen,  $DE \perp AC$ ,  $m(\widehat{ADE}) = m(\widehat{EDC})$   $|AB| = |DC|$ ,  $m(\widehat{ACD}) = 30^\circ$  ise  $m(\widehat{ABC}) = \alpha$  kaç derecedir?

- A) 40 B) 45 C) 55 D) 60 E) 75

5.

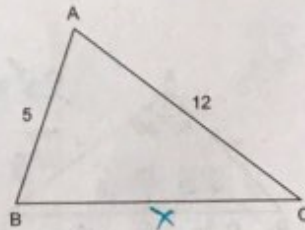


$AD \parallel BC$ ,  $m(\widehat{D}) = 100^\circ$ ,  $m(\widehat{ACD}) = 50^\circ$   $|AC| = |BC|$  ise  $m(\widehat{ABC}) = \alpha$  kaç derecedir?

- A) 45 B) 60 C) 75 D) 80 E) 85

$\alpha + \alpha + 30 = 180$   
 $\alpha = 75$

6.



ABC bir üçgen,  $m(\widehat{A}) > 90^\circ$ ,  $|AB| = 5$  cm  $|AC| = 12$  cm ise  $|BC|$  nin alabileceği tam sayı değeri kaç tanedir?

- A) 2 B) 3 C) 4 D) 5 E) 6

$12 - 5 < x < 12 + 5$   $x^2 > 5^2 + 12^2$   
 $7 < x < 17$   $x^2 > 169$   
 $14, 15, 16 \rightarrow 3 \text{ tane } x > 13$

YAYIN DENİZİ

GEOMETRİ

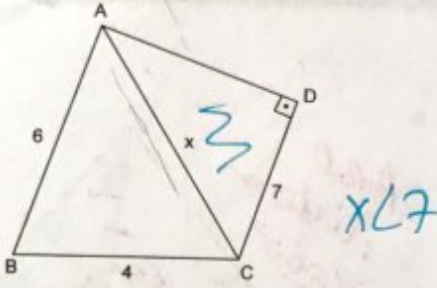
135



# ÜÇGENLER

7.

Cevap 18  
Sırtıyor.



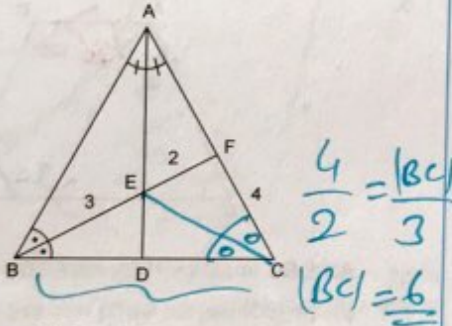
ABC ve ACD bir üçgen,  $AD \perp DC$ ,  $|AB| = 6$  cm  
 $|BC| = 4$  cm,  $|DC| = 7$  cm ise,  $|AC| = x$  in alabileceği  
tam sayı değerleri toplamı kaçtır?

- A) 12 B) 13 C) 14 D) 16 E) 17

$6-4 < x < 6+4$   
 $2 < x < 10$

3, 4, 5, 6  
Toplamı = 18

8.

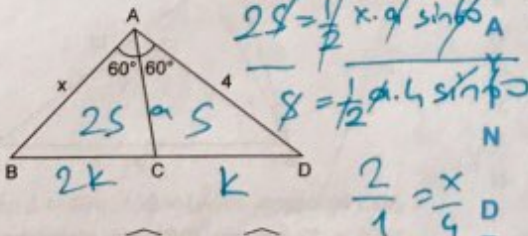


ABC bir üçgen,  $[AD]$  ve  $[BF]$  açıortay,  $|BE| = 3$  cm  
 $|EF| = 2$  cm,  $|FC| = 4$  cm ise  $|BC|$  kaç cm dir?

- A) 4 B) 5 C) 6 D) 7 E) 8

$\frac{4}{2} = \frac{|BC|}{3}$   
 $|BC| = 6$

9.

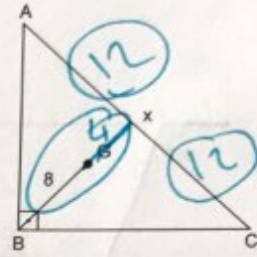


ABC bir üçgen,  $m(\widehat{BAC}) = m(\widehat{CAD}) = 60^\circ$   
 $|BC| = 2|CD|$ ,  $|AD| = 4$  cm ise,  $|AB| = x$  kaç cm dir?

- A) 6 B) 7 C) 8 D) 9 E) 10

$2s = \frac{1}{2} x \cdot 4 \cdot \sin 60^\circ$   
 $s = \frac{1}{2} x \cdot 4 \cdot \sin 60^\circ$   
 $\frac{2}{1} = \frac{x}{4}$   
 $x = 8$

10.

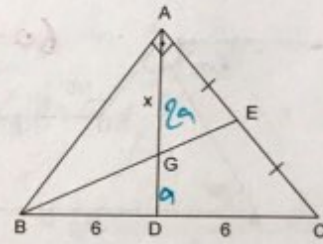


ABC bir üçgen,  $AB \perp BC$ , G noktası üçgenin ağırlık  
merkezi,  $|BG| = 8$  cm ise  $|AC|$  kaç cm dir?

- A) 12 B) 16 C) 18 D) 20 E) 24

$x = 24$

11.

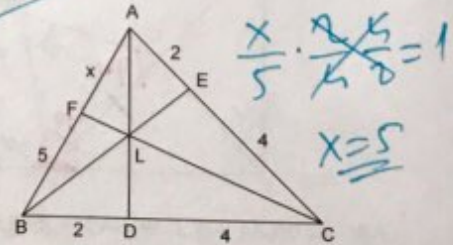


ABC bir üçgen,  $AB \perp AC$ ,  $|AE| = |EC|$ ,  
 $|BD| = |DC| = 6$  cm ise,  $|AG| = x$  kaç cm dir?

- A) 2 B) 3 C) 4 D) 5 E) 6

$3a = 6 \Rightarrow a = 2$   
 $2a = 4$   
 $|AO| = |BO| = |CO|$   
muhtemelöslü  
G noktası  
ağırlık merkezi

12.



ABC bir üçgen, B, L, E ve C, L, F noktaları doğrusal  
 $|AE| = |BD| = 2$  cm,  $|CE| = |CD| = 4$  cm,  $|BF| = 5$  cm  
ise,  $|AF| = x$  kaç cm dir?

- A) 5 B) 6 C) 8 D) 10 E) 12

$\frac{x}{5} \cdot \frac{2}{4} = 1$   
 $x = 5$

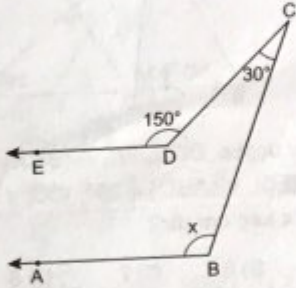
Seva teoremi

DE N I Z I

1.B	2.B	3.E	4.D	5.C	6.B	7.E	8.C	9.C	10.E	11.C	12.A
-----	-----	-----	-----	-----	-----	-----	-----	-----	------	------	------



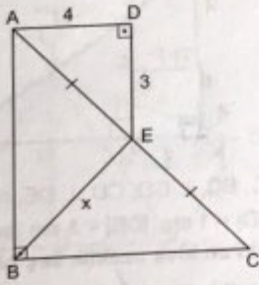
1.



$AB \parallel ED$ ,  $m(\widehat{EDC}) = 150^\circ$ ,  $m(\widehat{DCB}) = 30^\circ$  ise,  $m(\widehat{ABC}) = x$  kaç derecedir?

- A) 120 B) 130 C) 135 D) 140 E) 150

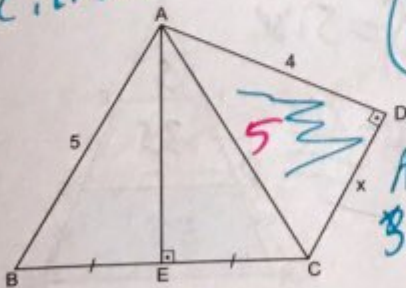
2.



ABC ve ADE birer üçgen,  $AB \perp BC$ ,  $AD \perp DE$ ,  $|AE| = |EC|$ ,  $|AD| = 4$  cm,  $|DE| = 3$  cm ise,  $|BE| = x$  kaç cm dir?

- A) 4 B) 5 C) 7 D) 8 E) 10

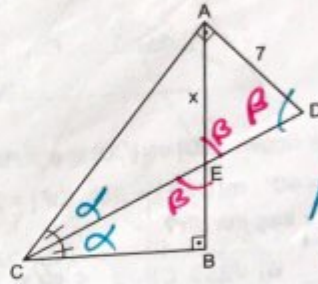
3. BAC ikizkenar



ABC ve ADC birer üçgen,  $AE \perp BC$ ,  $AD \perp DC$ ,  $|BE| = |EC|$ ,  $|AB| = 5$  cm,  $|AD| = 4$  cm ise,  $|CD| = x$  kaç cm dir?

- A) 1 B) 2 C) 3 D) 4 E) 5

4.

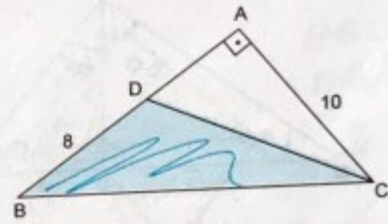


ABC ve ACD birer üçgen,  $BC \perp AB$ ,  $AC \perp AD$ ,  $m(\widehat{ACD}) = m(\widehat{DCB})$ ,  $|AD| = 7$  cm ise,  $|AE| = x$  kaç cm dir?

- A) 4 B) 5 C) 6 D) 7 E) 8

AED ikizkenar x=7

5.

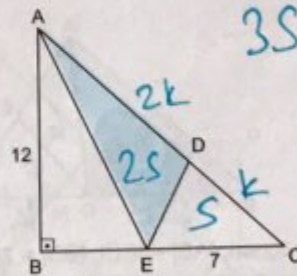


ABC bir üçgen,  $BA \perp AC$ ,  $|AC| = 10$  cm,  $|BD| = 8$  cm ise BDC üçgeninin alanı kaç  $cm^2$  dir?

- A) 20 B) 28 C) 30 D) 35 E) 40

$Alan = \frac{8 \cdot 10}{2} = 40$

6.



ABC bir üçgen,  $AB \perp BC$ ,  $|AB| = 12$  cm,  $|EC| = 7$  cm  $|AD| = 2|DC|$  ise ADE üçgeninin alanı kaç  $cm^2$  dir?

- A) 28 B) 32 C) 34 D) 36 E) 48

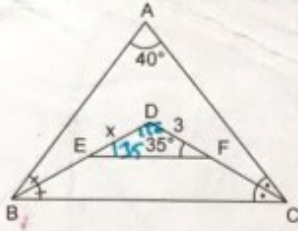
$3S = \frac{7 \cdot 12}{2}$

$S = 14$   
 $2S = 28$



# ÜÇGENLER

7.

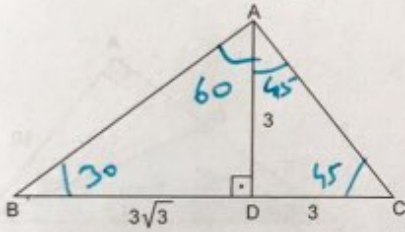


ABC bir üçgen, [BD] ve [CD] iç açıortay,  $m(\widehat{A}) = 40^\circ$ ,  $m(\widehat{DFE}) = 35^\circ$ ,  $|DF| = 3$  cm ise,  $|ED| = x$  kaç cm dir?

- A) 1 B)  $\sqrt{2}$  C)  $\sqrt{3}$  D) 3 E) 4

$m(\widehat{D}) = 90 + \frac{40}{2} = 110^\circ$   
 $m(\widehat{DEF}) = 35^\circ$   
 DEF ikizkenar üçgen  
 $x = 3$

8.

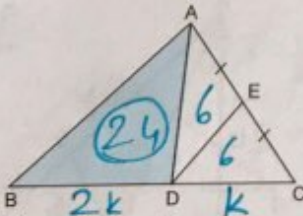


ABC bir üçgen,  $AD \perp BC$ ,  $|AD| = |DC| = 3$  cm,  $|BD| = 3\sqrt{3}$  cm ise  $m(\widehat{BAC})$  kaç derecedir?

- A) 45 B) 75 C) 105 D) 120 E) 150

ABD  $\rightarrow$  30-60-90 üçgeni.  
 ADC  $\rightarrow$  45-45-90 üçgeni.  
 $m(\widehat{BAC}) = 60 + 45 = 105$

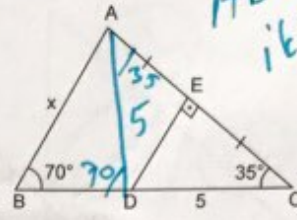
9.



ABC bir üçgen,  $|AE| = |EC|$ ,  $|BD| = 2|DC|$ , AED üçgeninin alanı  $6 \text{ cm}^2$  ise ABD üçgeninin alanı kaç  $\text{cm}^2$  dir?

- A) 24 B) 26 C) 28 D) 32 E) 48

10.

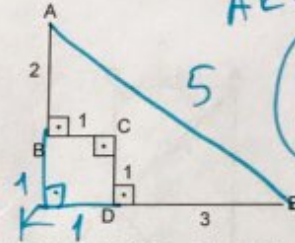


ABC bir üçgen,  $DE \perp AC$ ,  $m(\widehat{BCA}) = 35^\circ$ ,  $|AE| = |EC|$ ,  $m(\widehat{ABC}) = 70^\circ$ ,  $|DC| = 5$  cm ise  $|AB| = x$  kaç cm dir?

- A) 5 B) 6 C) 7 D) 8 E) 9

ABD ikizkenar  
 $x = 5$

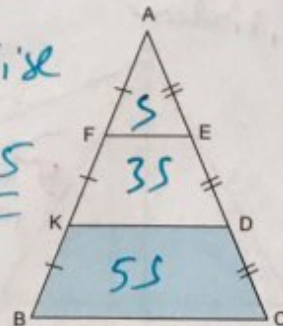
11.



$AB \perp BC$ ,  $BC \perp CD$ ,  $CD \perp DE$ ,  $|AB| = 2$  cm,  $|BC| = |CD| = 1$  cm,  $|DE| = 3$  cm ise A ile E noktaları arasındaki en kısa uzaklık kaç cm dir?

- A) 4 B)  $3\sqrt{3}$  C) 5 D)  $4\sqrt{2}$  E) 8

12.



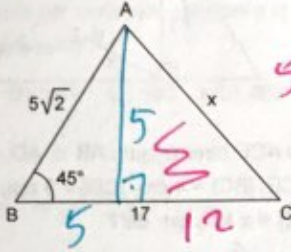
ABC bir üçgen,  $|AF| = |FK| = |KB|$ ,  $|AE| = |ED| = |DC|$  AFE üçgeninin alanı  $5 \text{ cm}^2$  ise, KBCD dörtgeninin alanı kaç  $\text{cm}^2$  dir?

- A) 12 B) 15 C) 20 D) 24 E) 25

YAYIN DENİZİ



1.

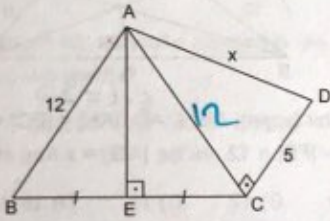


5-12-13  
üçgeni  
x=13

ABC bir üçgen,  $m(\widehat{ABC}) = 45^\circ$ ,  $|AB| = 5\sqrt{2}$  cm  
 $|BC| = 17$  cm ise,  $|AC| = x$  kaç cm dir?

- A) 5 B) 8 C) 10 D) 12 E) 13

2.



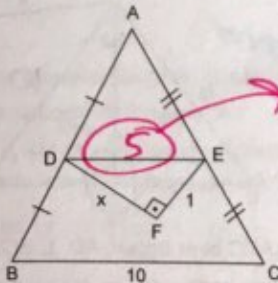
Dibrahim - hocca

ABC ve ACD birer üçgen,  $AE \perp BC$ ,  $AC \perp CD$   
 $|BE| = |EC|$ ,  $|AB| = 12$  cm,  $|CD| = 5$  cm ise,  $|AD| = x$   
kaç cm dir?

- A) 5 B)  $\sqrt{34}$  C) 6 D) 8 E) 13

[AE] yükseklik BAC ikizkenar  
5-12-13 üçgeninde x=13

3.



orta taban

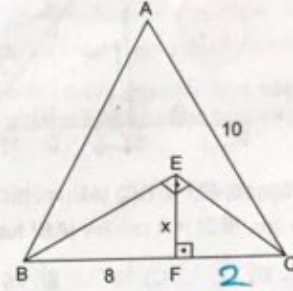
ABC bir üçgen,  $|AD| = |DB|$ ,  $|AE| = |EC|$ ,  $DF \perp FE$   
 $|BC| = 10$  cm,  $|EF| = 1$  cm ise,  $|DF| = x$  kaç cm dir?

- A) 2 B) 3 C)  $3\sqrt{2}$  D) 4 E)  $2\sqrt{6}$

$$5^2 = x^2 + 1^2$$

$$x^2 = 24 \Rightarrow x = 2\sqrt{6}$$

4.

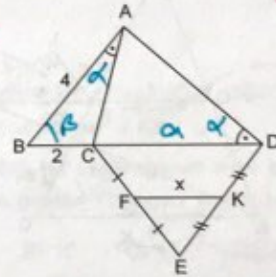


ABC bir eşkenar üçgen,  $BE \perp EC$ ,  $EF \perp BC$ ,  
 $|AC| = 10$  cm,  $|BF| = 8$  cm ise,  $|EF| = x$  kaç cm dir?

- A)  $2\sqrt{2}$  B) 3 C) 4 D)  $2\sqrt{5}$  E) 5

BEC'de öklit  $x^2 = 8 \cdot 2$   
 $x^2 = 16$   
 $x = 4$

5.



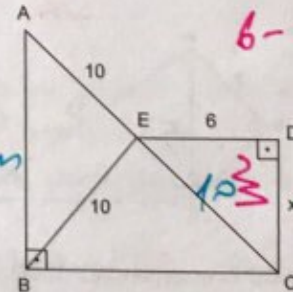
ABC ile  
DBA benzer  
 $\frac{2}{4} = \frac{4}{a+2}$   
 $a = 6$

ABD ve CED birer üçgen,  $m(\widehat{BAC}) = m(\widehat{BDA})$   
 $|CF| = |FE|$ ,  $|DK| = |KE|$ ,  $|BC| = 2$  cm,  $|AB| = 4$  cm ise  
 $|FK| = x$  kaç cm dir?

- A) 1 B) 2 C)  $\sqrt{3}$  D) 3 E) 4

(FK) orta taban x=3

6.



6-8-10  
üçgeninde

Muktesem  
üçlü

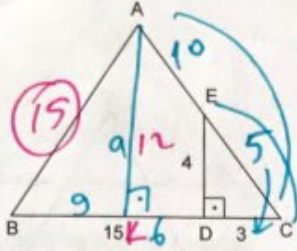
x=8

ABC ve EDC birer üçgen,  $AB \perp BC$ ,  $ED \perp DC$ ,  
 $|AE| = |EB| = 10$  cm,  $|ED| = 6$  cm ise,  $|DC| = x$  kaç  
cm dir?

- A)  $4\sqrt{2}$  B)  $4\sqrt{3}$  C) 7 D) 8 E) 9



7.

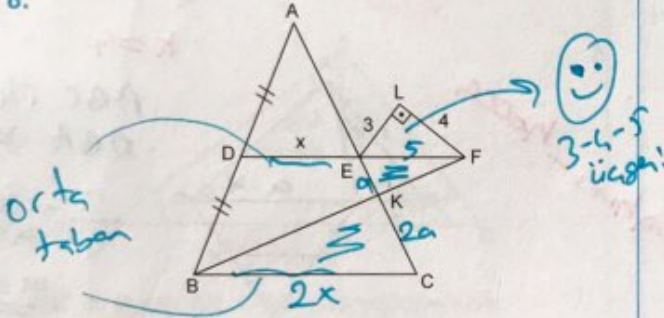


ABC bir üçgen,  $ED \perp BC$ ,  $|AE| = 2|EC|$ ,  $|BD| = 15$  cm,  $|CD| = 3$  cm,  $|ED| = 4$  cm ise  $|AB|$  kaç cm dir?

- A) 10 B) 12 C) 13 D) 15 E) 17

$\frac{5}{15} = \frac{4}{a}$   $a = 12$   $\Delta AEB$ 'de  $9-12-15$  üçgeni

8.



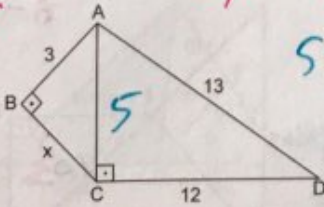
ABC ve LEF birer üçgen,  $DF \parallel BC$ ,  $EL \perp LF$ ,  $|AD| = |DB|$ ,  $|KC| = 2|EK|$ ,  $|EL| = 3$  cm,  $|LF| = 4$  cm ise,  $|DE| = x$  kaç cm dir?

- A) 4 B) 5 C) 6 D) 7 E) 8

kelebek  $x = 5$   $\frac{4}{2x} = \frac{3}{2x}$

9.

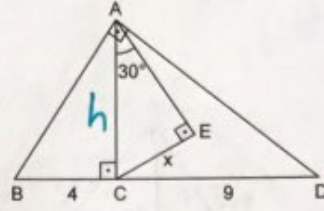
ABC 3-4-5 üçgeni  $x = 4$



ABC ve ACD birer üçgen,  $AC \perp CD$ ,  $AB \perp BC$ ,  $|AD| = 13$  cm,  $|CD| = 12$  cm,  $|AB| = 3$  cm ise,  $|BC| = x$  kaç cm dir?

- A)  $2\sqrt{2}$  B) 3 C) 4 D)  $4\sqrt{2}$  E)  $4\sqrt{3}$

10.

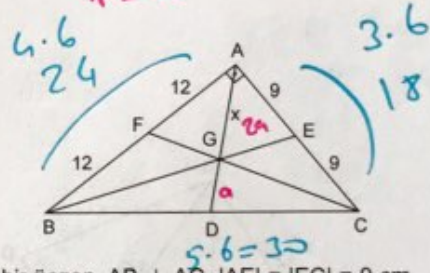


ABD ve ACE birer üçgen,  $AB \perp AD$ ,  $AC \perp BD$ ,  $AE \perp CE$ ,  $|BC| = 4$  cm,  $|CD| = 9$  cm,  $m(\widehat{CAE}) = 30^\circ$  ise,  $|CE| = x$  kaç cm dir?

- A)  $2\sqrt{2}$  B) 3 C) 4 D) 5 E)  $4\sqrt{2}$

$h^2 = 4 \cdot 9$  öklitten  $h = 6$  ACE üçgeni 30-60-90 üçgeni  $x = 3$

11.



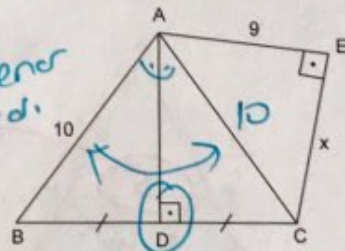
ABC bir üçgen,  $AB \perp AC$ ,  $|AE| = |EC| = 9$  cm,  $|AF| = |FB| = 12$  cm ise  $|AG| = x$  kaç cm dir?

- A) 10 B) 12 C) 15 D) 18 E) 20

ABC 3-4-5 in katları  $|BC| = 30$   $|BO| = |OC| = 15 = |AO|$   $3a = 15$   $a = 5$   $2a = 10$

12.

iki tkenor DAKI v.d.  $|AO|$ 'ye dikken



ABC ve AEC birer üçgen,  $AD \perp BC$ ,  $AE \perp EC$ ,  $|BD| = |DC|$ ,  $|AB| = 10$  cm,  $|AE| = 9$  cm ise,  $|EC| = x$  kaç cm dir?

- A)  $2\sqrt{3}$  B) 4 C)  $3\sqrt{2}$  D)  $\sqrt{19}$  E) 5

ACE'de pisagor  $x^2 + 9^2 = 10^2$   $x = \sqrt{19}$   $x^2 = 19$