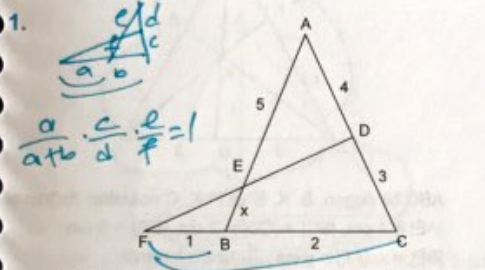


Bu konu YGS'ye dahil değil, fakat diğer konularda karşımıza geldiği için ve YGS'de kapsam dışı sorular olabileceği için kitaptan çıkarmadık 😊

ÖZEL TEOREMLER

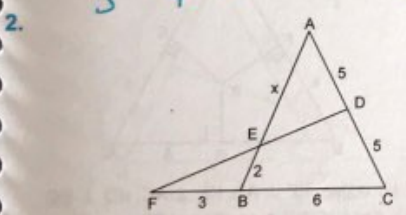
1



ABC ve FDC birer üçgen, |AD| = 4 cm, |DC| = 3 cm |FB| = 1 cm, |BC| = 2 cm, |AE| = 5 cm ise, |EB| = x kaç cm dir?

- A)  $\frac{5}{4}$  B) 2 C)  $\frac{7}{3}$  D) 3 E) 4

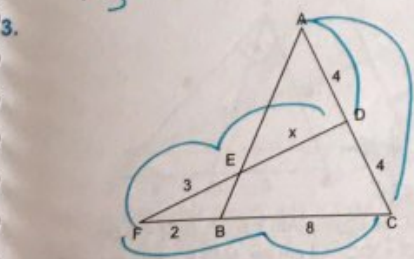
$\frac{1}{3} \cdot \frac{3}{4} \cdot \frac{5}{x} = 1 \quad x = \frac{5}{4}$



ABC ve DFC birer üçgen, |AD| = |DC| = 5 cm |FB| = 3 cm, |BC| = 6 cm, |EB| = 2 cm ise |AE| = x kaç cm dir?

- A) 2 B) 4 C) 6 D) 7 E) 8

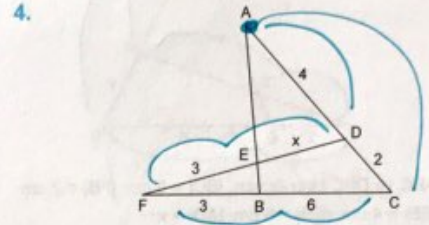
$\frac{2}{8} \cdot \frac{3}{5} \cdot \frac{x}{2} = 1 \quad x = 6$



ABC ve DFC birer üçgen, |AD| = 4 cm, |DC| = 3 cm |BC| = 8 cm, |FB| = 2 cm, |FE| = 3 cm ise, |ED| = x kaç cm dir?

- A) 3 B) 4 C) 5 D) 6 E) 7

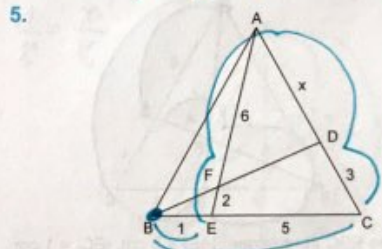
$\frac{4}{8} \cdot \frac{3}{2} \cdot \frac{x}{3} = 1 \quad x = 6$



ABC ve DFC birer üçgen, |AD| = 4 cm, |DC| = 2 cm |BC| = 6 cm, |FB| = 3 cm, |FE| = 3 cm ise, |ED| = x kaç cm dir?

- A) 3 B) 4 C) 5 D) 6 E) 7

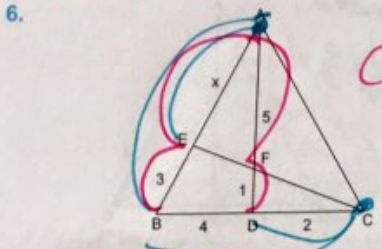
$\frac{4}{6} \cdot \frac{6}{3} \cdot \frac{3}{x} = 1 \quad x = 4$



AEC ve DBC birer üçgen, |FE| = 2 cm, |BE| = 1 cm |EC| = 5 cm, |CD| = 3 cm, |AF| = 6 cm ise, |AD| = x kaç cm dir?

- A)  $\frac{1}{4}$  B) 1 C)  $\frac{3}{2}$  D) 2 E) 3

$\frac{1}{6} \cdot \frac{3}{x} \cdot \frac{6}{2} = 1 \quad x = \frac{3}{2}$



ABD ve BEC birer üçgen, |BD| = 4 cm, |DC| = 2 cm |BE| = 3 cm, |AF| = 5 cm, |FD| = 1 cm ise, |AE| = x kaç cm dir?

- A)  $\frac{5}{2}$  B) 3 C)  $\frac{7}{2}$  D) 4 E) 5

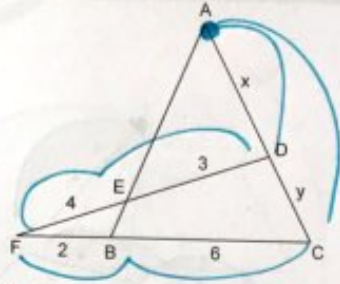
$\frac{2}{2+4} \cdot \frac{3}{x} \cdot \frac{5}{1} = 1 \quad x = 5$

YAYIN DENİZİ

GEOMETRİ

# ÖZEL TEOREMLER

7.

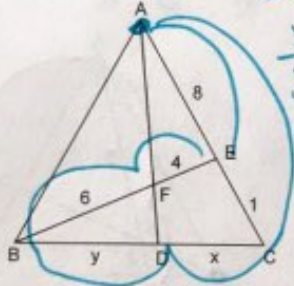


ABC ve DFC birer üçgen,  $|BC| = 6$  cm,  $|FB| = 2$  cm  
 $|FE| = 4$  cm,  $|ED| = 3$  cm,  $|AD| = x$   
 $|CD| = y$  ise,  $\frac{x}{y}$  oranı kaçtır?

- A)  $\frac{1}{3}$  B)  $\frac{1}{2}$  C) 1 D)  $\frac{5}{4}$  E) 2

$$\frac{x}{x+y} \cdot \frac{6}{2} \cdot \frac{4}{3} = 1 \quad \begin{cases} 4x = x+y \\ 3x = y \end{cases}$$

8.



ADC ve EBC birer üçgen,  $|AE| = 8$  cm,  $|EC| = 1$  cm  
 $|BF| = 6$  cm,  $|FE| = 4$  cm,  $|BD| = y$ ,  $|DC| = x$  ise  
 $\frac{x}{y}$  oranı kaçtır?

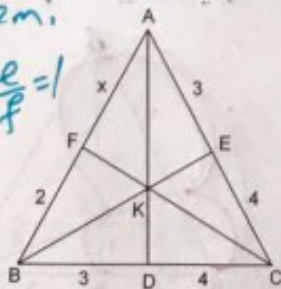
- A)  $\frac{1}{8}$  B)  $\frac{1}{7}$  C)  $\frac{2}{5}$  D)  $\frac{3}{7}$  E)  $\frac{3}{4}$

$$\frac{8}{9} \cdot \frac{x}{y} \cdot \frac{6}{4} = 1 \quad \frac{x}{y} = \frac{36}{48} = \frac{3}{4}$$

9. Seva Teoremi:



$$\frac{a}{b} \cdot \frac{c}{d} \cdot \frac{e}{f} = 1$$



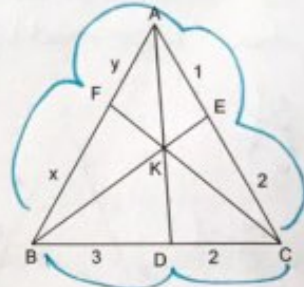
ABC bir üçgen, B, K, E ve F, K, C noktaları doğrusal  
 $|AE| = |BD| = 3$  cm,  $|EC| = |DC| = 4$  cm,  $|BF| = 2$  cm  
 ise,  $|AF| = x$  kaç cm dir?

- A) 1 B) 2 C)  $\frac{5}{2}$  D) 3 E)  $\frac{7}{2}$

$$\frac{3}{4} \cdot \frac{4}{3} \cdot \frac{x}{2} = 1 \quad \underline{x=2}$$

1.A	2.C	3.D	4.B	5.C	6.E	7.A	8.E	9.B	10.D	11.E	12.C
-----	-----	-----	-----	-----	-----	-----	-----	-----	------	------	------

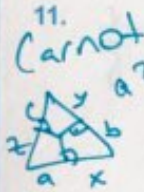
10.



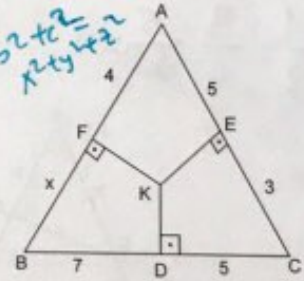
ABC bir üçgen, B, K, E ve F, K, C noktaları doğrusal  
 $|AE| = 1$  cm,  $|EC| = |CD| = 2$  cm,  $|BD| = 3$  cm  
 $|BF| = x$ ,  $|AF| = y$  ise,  $\frac{x}{y}$  oranı kaçtır?

- A)  $\frac{1}{4}$  B)  $\frac{1}{2}$  C) 2 D) 3 E)  $\frac{7}{2}$

$$\frac{3}{2} \cdot \frac{2}{1} \cdot \frac{y}{x} = 1 \quad \frac{x}{y} = 3$$



11. Carnot  
 $a^2 + b^2 + c^2 = x^2 + y^2 + z^2$



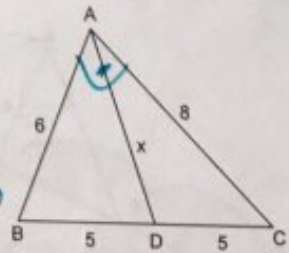
ABC bir üçgen,  $KF \perp AB$ ,  $KE \perp AC$ ,  $KD \perp BC$   
 $|AE| = 5$  cm,  $|EC| = 3$  cm,  $|BD| = 7$  cm,  $|DC| = 5$  cm  
 $|AF| = 4$  cm ise,  $|BF| = x$  kaç cm dir?

- A) 1 B) 2 C)  $2\sqrt{2}$  D) 3 E)  $2\sqrt{6}$

$$7^2 + 3^2 + 4^2 = 5^2 + 5^2 + x^2 \quad x = 2\sqrt{6}$$

12.

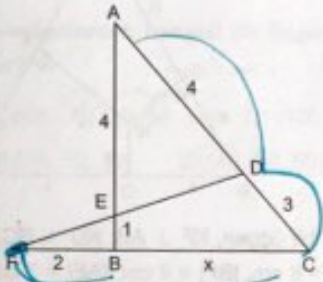
$x=5$   
 muhtemel  
 üçlü



ABC bir üçgen,  $|AB| = 6$  cm,  $|AC| = 8$  cm  
 $|BD| = |DC| = 5$  cm ise,  $|AD| = x$  kaç cm dir?

- A) 3 B) 4 C) 5 D) 6 E) 7

1.

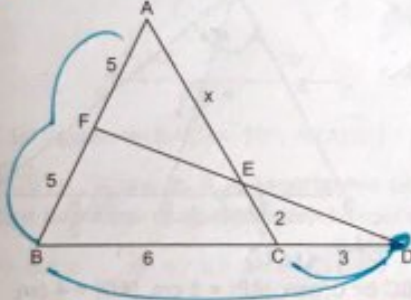


ABC ve FDC birer üçgen,  $|FB| = 2$  cm,  $|CD| = 3$  cm,  $|AD| = |AE| = 4$  cm,  $|EB| = 1$  cm ise,  $|BC| = x$  kaç cm dir?

- A) 1 B) 2 C) 3 ~~D) 4~~ E) 5

$$\frac{2}{2+x} \cdot \frac{3}{4} \cdot \frac{4}{1} = 1 \quad x=4$$

2.

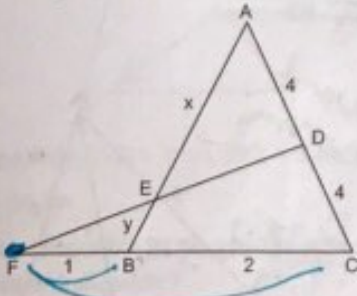


ABC ve BFD birer üçgen,  $|BC| = 6$  cm,  $|CD| = 3$  cm,  $|CE| = 2$  cm,  $|AF| = |FB| = 5$  cm ise,  $|AE| = x$  kaç cm dir?

- ~~A) 6~~ B) 7 C) 8 D) 9 E) 10

$$\frac{3}{9} \cdot \frac{5}{5} \cdot \frac{x}{2} = 1 \quad x=6$$

3.

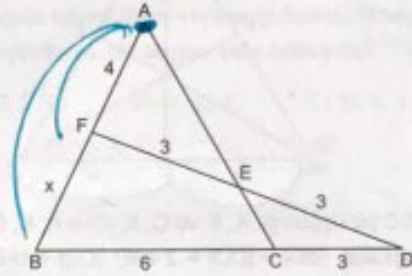


ABC ve DFC birer üçgen,  $|FB| = 1$  cm,  $|BC| = 2$  cm,  $|CD| = |AD| = 4$  cm,  $|AE| = x$ ,  $|EB| = y$  ise,  $\frac{x}{y}$  oranı kaçtır?

- A) 1 B)  $\frac{3}{2}$  C) 2 D)  $\frac{5}{2}$  ~~E) 3~~

$$\frac{1}{3} \cdot \frac{4}{4} \cdot \frac{x}{y} = 1 \quad \frac{x}{y} = 3$$

4.

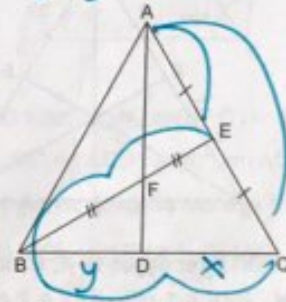


ABC ve BDF birer üçgen,  $|BC| = 6$  cm,  $|CD| = 3$  cm,  $|DE| = |EF| = 3$  cm,  $|AF| = 4$  cm ise,  $|BF| = x$  kaç cm dir?

- A) 2 B) 3 ~~C) 4~~ D) 5 E) 6

$$\frac{4}{4+x} \cdot \frac{6}{3} \cdot \frac{3}{3} = 1 \Rightarrow x=4$$

5.

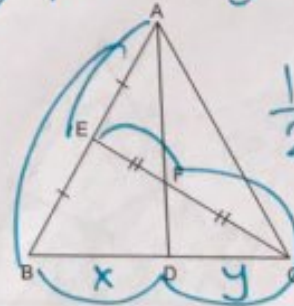


ADC ve EBC birer üçgen,  $|AE| = |EC|$ ,  $|BF| = |FE|$  ise  $\frac{|CD|}{|DB|}$  oranı kaçtır?

- A)  $\frac{1}{3}$  ~~B) 2~~ C) 3 D)  $\frac{7}{2}$  E)  $\frac{9}{2}$

$$\frac{1}{2} \cdot \frac{x}{y} \cdot \frac{1}{1} = 1 \quad \frac{x}{y} = 2$$

6.



$$\frac{1}{2} \cdot \frac{x}{y} \cdot \frac{1}{1} = 1 \quad \frac{x}{y} = 2$$

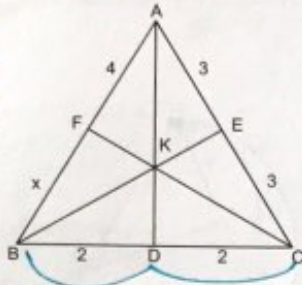
ABD ve EBC birer üçgen,  $|AE| = |EB|$ ,  $|EF| = |FC|$  ise  $\frac{|BD|}{|DC|}$  oranı kaçtır?

- A)  $\frac{1}{2}$  B) 1 ~~C) 2~~ D) 3 E)  $\frac{7}{2}$

YAYIN DENİZİ

7.

Sev9



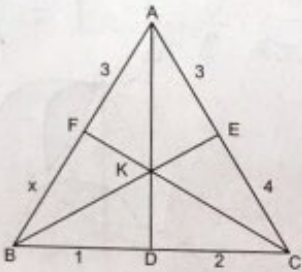
ABC bir üçgen B, K, E ve C, K, F ve A, K, D noktaları doğrusal,  $|BD| = |DC| = 2$  cm,  $|CE| = |AE| = 3$  cm,  $|AF| = 4$  cm ise,  $|FB| = x$  kaç cm dir?

- A) 3 B) 4 C) 5 D) 6 E) 7

$$\frac{2}{2} \cdot \frac{3}{3} \cdot \frac{4}{x} = 1 \quad \underline{x=4}$$

8.

Sev9



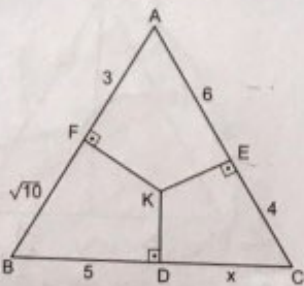
ABC ve FBC birer üçgen B, K, E ve A, K, D noktaları doğrusal,  $|BD| = 1$  cm,  $|DC| = 2$  cm,  $|CE| = 4$  cm,  $|AE| = |AF| = 3$  cm ise,  $|FB| = x$  kaç cm dir?

- A)  $\frac{1}{4}$  B)  $\frac{1}{2}$  C) 2 D)  $\frac{5}{2}$  E) 3

$$\frac{1}{2} \cdot \frac{4}{3} \cdot \frac{3}{x} = 1 \quad \underline{x=2}$$

9.

Carnot.



ABC bir üçgen,  $KE \perp AC$ ,  $KD \perp BC$ ,  $KF \perp AB$ ,  $|BD| = 5$  cm,  $|CE| = 4$  cm,  $|AE| = 6$  cm,  $|AF| = 3$  cm  $|BF| = \sqrt{10}$  cm ise,  $|CD| = x$  kaç cm dir?

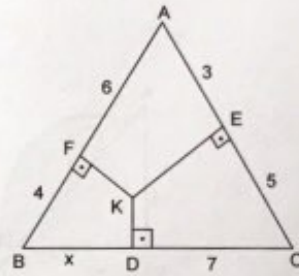
- A) 2 B)  $\sqrt{5}$  C)  $\sqrt{6}$  D) 3 E)  $2\sqrt{3}$

$$\underline{x=2}$$

$$5^2 + 4^2 + 3^2 = x^2 + 5^2 + (\sqrt{10})^2$$

10.

Carnot



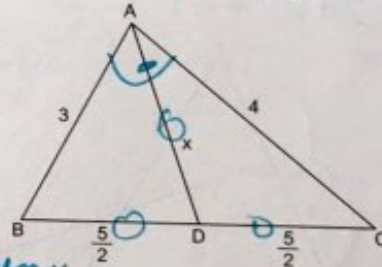
ABC bir üçgen,  $KF \perp AB$ ,  $KD \perp BC$ ,  $KE \perp AC$   $|AF| = 6$  cm,  $|BF| = 4$  cm,  $|AE| = 3$  cm,  $|EC| = 5$  cm  $|DC| = 7$  cm ise,  $|BD| = x$  kaç cm dir?

- A) 3 B)  $\sqrt{13}$  C) 4 D)  $2\sqrt{5}$  E) 6

$$x^2 + 5^2 + 6^2 = 7^2 + 3^2 + 4^2 \quad \underline{x=\sqrt{13}}$$

11.

3-4-5 üçgeni



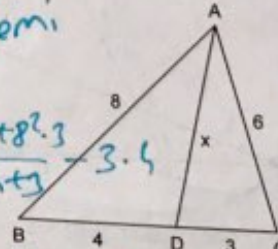
ABC bir üçgen,  $|AB| = 3$  cm,  $|AC| = 4$  cm,  $|BD| = |DC| = \frac{5}{2}$  cm ise,  $|AD| = x$  kaç cm dir?

- A)  $\frac{3}{2}$  B) 2 C)  $\frac{5}{2}$  D) 3 E) 4

$$\underline{\underline{x=\frac{5}{2}}}$$

Stewart teoremi

$$x^2 = \frac{6^2 \cdot 4 + 8^2 \cdot 3}{4+3} - 3 \cdot 4$$



yada çarpık üçgen  $x^2 = 6 \cdot 8 - 3 \cdot 4$   
ABC bir üçgen,  $|AB| = 8$  cm,  $|AC| = 6$  cm,  $|BD| = 4$  cm  $|DC| = 3$  cm ise,  $|AD| = x$  kaç cm dir?

- A) 2 B) 3 C) 4 D) 5 E) 6

$$\underline{\underline{x=6}}$$